

Ref. : F3240-EP.pas

Rev. : A

Date : 20/11/2019

Page : 1/1

# FLANGED TYPE "Y" STRAINER PN16

## F 3240-EP



### APPLICATION

Heating system and undrinkable domestic water, steam and other compatible fluids.

### GENERAL CHARACTERISTICS

"Y" body and bonnet in cast iron from DN15 to DN300 and in ductile iron for DN350 and DN450.

Dismountable stainless steel screen.  
Drain plug G1/2 (DN15-100); G3/4 (DN125-400)  
Flanged ends PN 16.

### CONSTRUCTION

7	1	Drain plug	Stainless Steel 304	
6	1	Gasket	EPDM Chaleur	
5	**	Screw	Stainless Steel 304	
4	1	Bonnet	Cast iron EN-GJL-250 (DN15-300)	
			Ductile iron EN-GJS-500 (DN350-400)	
3	1	Gasket	EPDM	
2	1	Screen	Stainless steel 304	DIN: X5CrNi18 10
			X5CrNi 18-10	ASTM: A 182 AISI 304 BS: 1449-2 304 S15
1	1	Body	Cast iron EN-GJL-250 (DN15-300)	
			Ductile iron EN-GJS-500 (DN350-400)	
<b>Pos.</b>	<b>Q-ty</b>	<b>Description</b>	<b>Material</b>	

### DIMENSIONS

DN	L	ØD	ØD1	ØD2	b	M	n	Z	Ød	H	H1	Weight (kg)	Mesh (mm)
15	130	95	65	45	14	M8-20	4	4	14	68	105	3	1
20	150	105	75	58	16	M8-20	4	4	14	78	118	3,2	
25	160	115	85	68	16	M8-25	4	4	14	85	130	4	
32	180	140	100	78	18	M8-25	4	4	18	104	154	6	
40	200	150	110	88	18	M10-30	4	4	18	106	169	7	
50	230	165	125	102	18	M10-35	4	4	18	124	199	8	
65	290	185	145	122	18	M10-35	4	4	18	147	237	12	
80	310	200	160	138	22	M12-40	4	8	18	161	260	14	
100	350	220	180	158	22	M12-45	4	8	18	193	321	18	
125	400	250	210	188	26	M16-45	6	8	18	257	410	28	
150	480	285	240	212	26	M16-50	6	8	23	291	466	40	
200	600	340	295	268	30	M16-50	8	12	23	357	570	70	
250	730	405	355	320	32	M16-50	8	12	23	443	666	130	
300	850	460	410	378	32	M16-50	10	12	27	516	786	170	
350	980	520	470	438	27	M16-60	12	16	27	565	915	240	
400	1100	580	525	490	32	M16-60	14	16	30	635	1041	345	
													1,3
													1,6

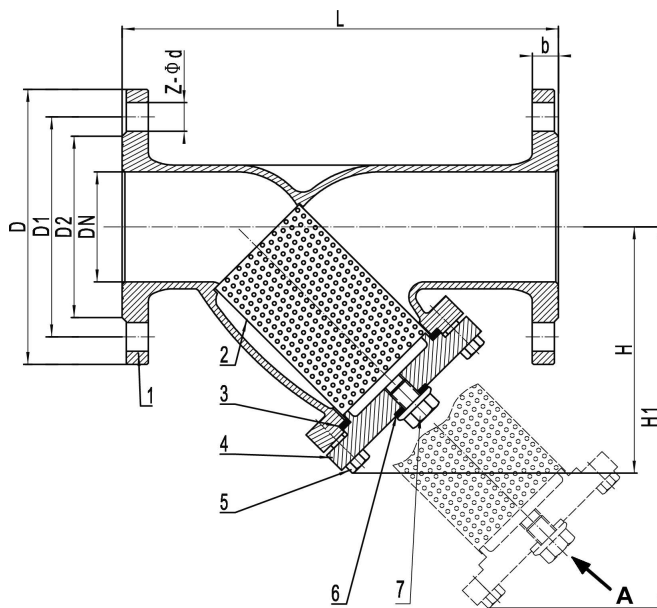
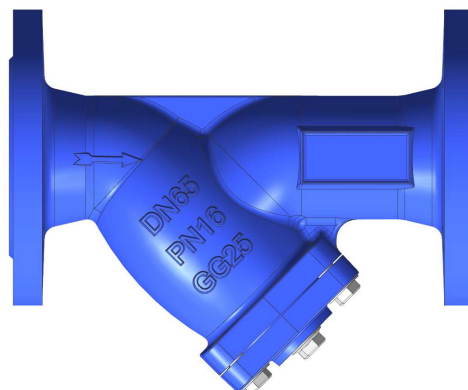
### WORKING CONDITIONS

Maximum working pressure :16 bar .  
Maximum temperature: -15°C / +140°C

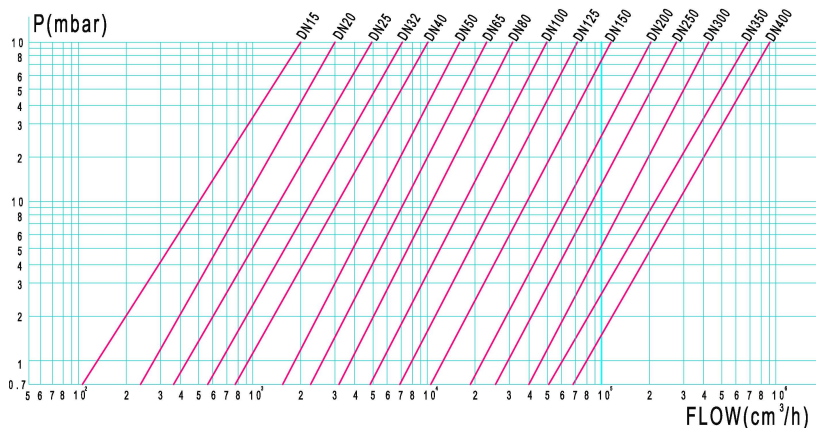
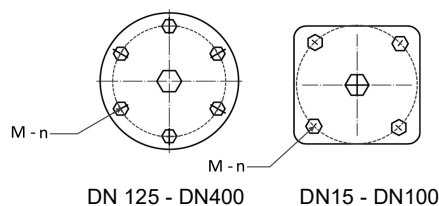
Pressure test according to standards  
EN 12266-1, DIN 3230, BS 5154 and ISO 5208 :  
Body : 24 bar.

### STANDARDS

Face to face according to standards EN 558-1 serie 1 and DIN 3202/1 serie F1.  
Flanges drilled according to EN 1092-2 PN16.



VIEW A



TECOFI France - 83, Rue Marcel Mérioux 69960 Corbas - FRANCE  
Tél. +33 (0) 4 72 79 05 79 - Fax +33 (0) 4 78 90 19 19 / +33 (0) 4 72 79 05 70  
Adresses e-mail : sales@tecofi.fr ; tecofi@tecofi.fr / Site web : www.tecofi.fr